



Naylor Road, Whetstone, N20 0HE
Per Month £1,895 Per Month Council Tax Band C

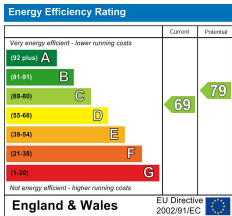
REAL ESTATES
Est.1981

Estate Agents · Residential Sales · Investments · Lettings

AVAILABLE 1ST FEBUARY

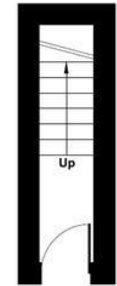
A well-located-newly refurbished first-floor flat offering 630 sq ft of accommodation, just a 2-minute walk from the Underground station (Totteridge & Whetstone, Northern Line).

The property comprises two double bedrooms, a spacious reception room, and a practical layout ideal for professional tenants. Quietly positioned with good natural light, this flat is perfectly suited for easy commuting and comfortable day-to-day living.

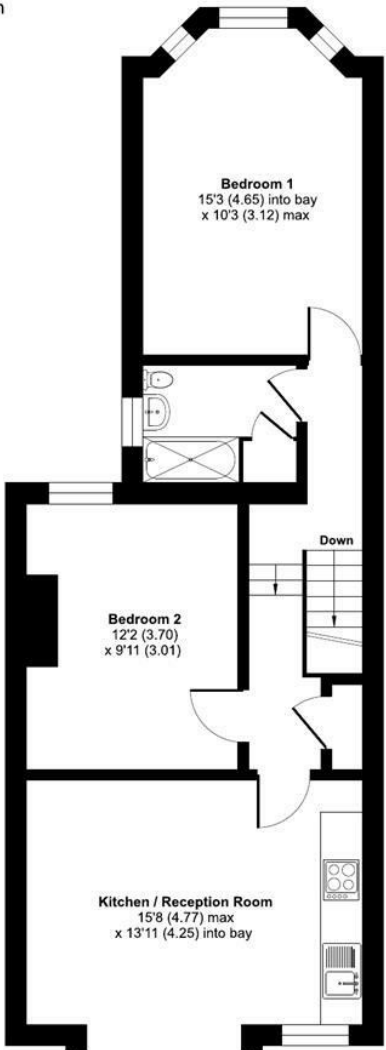


Naylor Road, London, N20

Approximate Area = 647 sq ft / 60.1 sq m
For identification only - Not to scale



GROUND FLOOR



FIRST FLOOR

Floor plan produced in accordance with RICS Property Measurement 2nd Edition, Incorporating International Property Measurement Standards (IPMS2 Residential). © richcom 2025. Produced for Real Estates. REF: 1388152